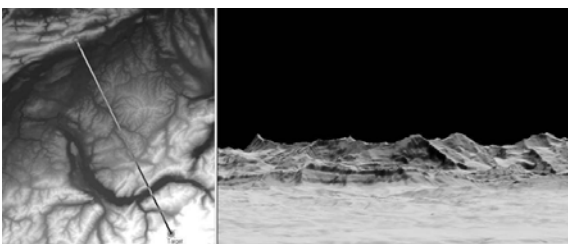
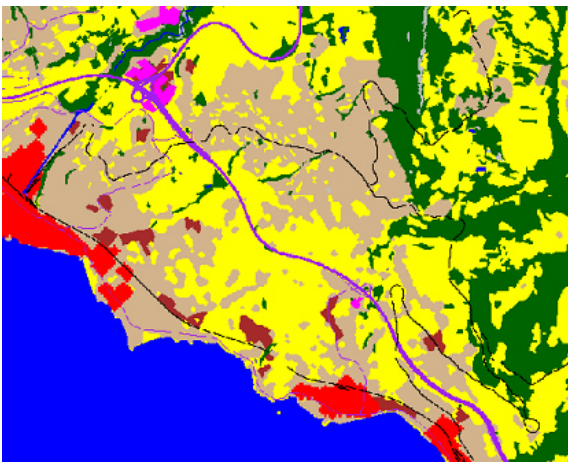
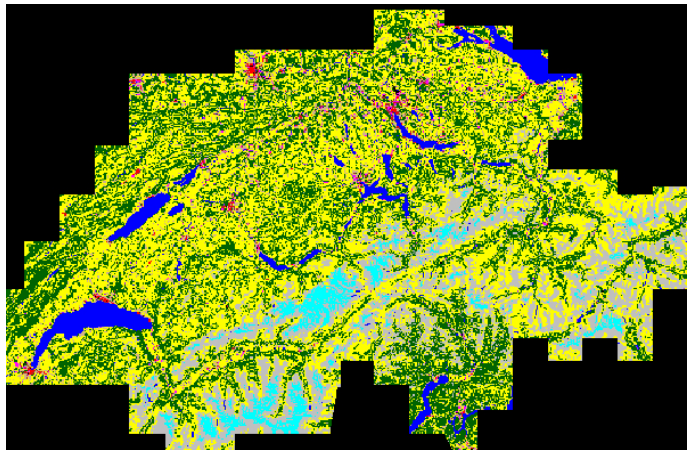


„Telecommunication” – Network Planning Switzerland

For the computation of the spatial propagation of radiation in telecommunication, precise and actual information of the Earth's surface is necessary. Satellite data are an excellent tool for such applications. In combination with auxiliary information as digital terrain models, vector and statistical data, precise model computations as well as 3-D visualizations are possible. Furthermore, simulated and measured data can be compared.



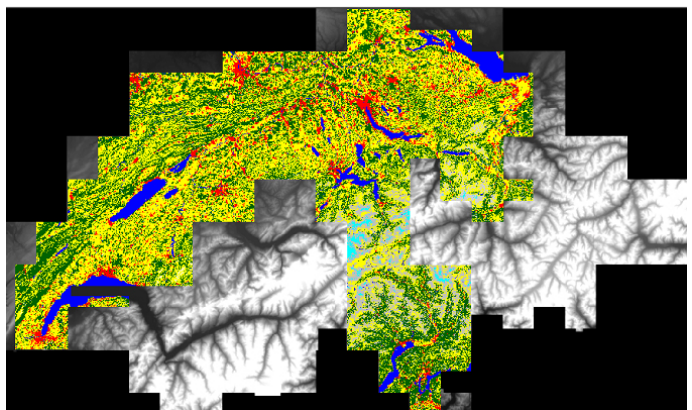
Credit: swisstopo/mfb-geo.com/2000



Credit: Eurimage/Spot Image/mfb-geo.com/2000

„Surface Morphology”

Landsat-TM/SPOT-P merge, 10m x 10m, true color image and surface morphology derived from satellite data and auxiliary information covering entire Switzerland.



Credit: Eurimage/Spot Image/swisstopo/mfb-geo.com/2000