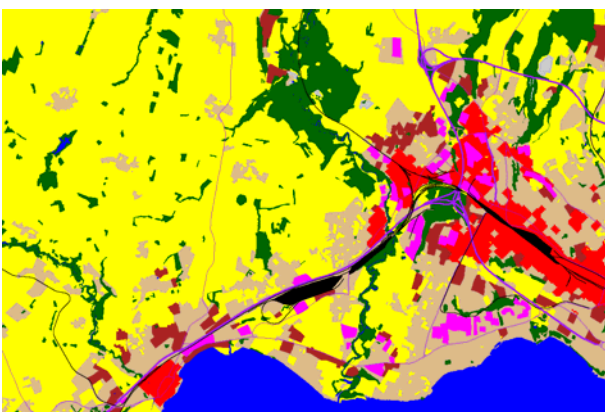


„Telecommunication” – Network Planning Detail Analysis Espace Mittelland & City of Lausanne

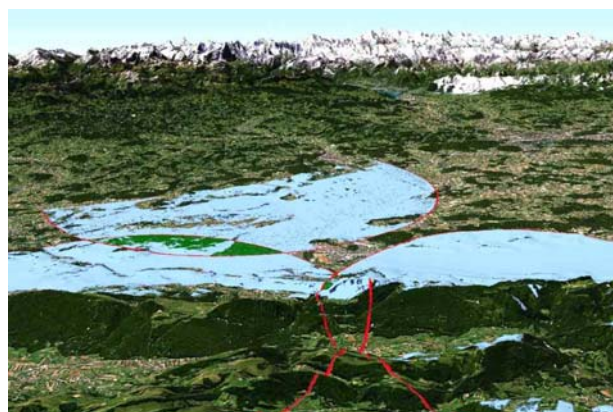
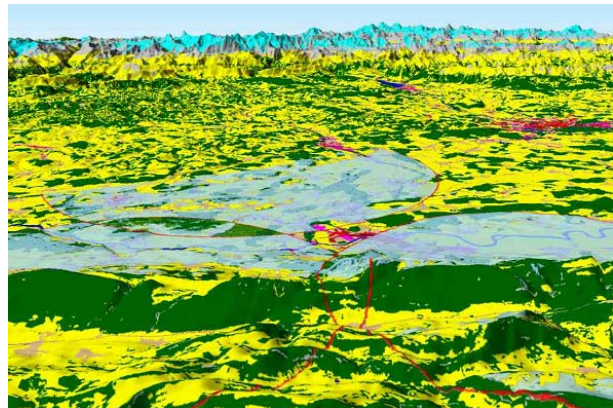
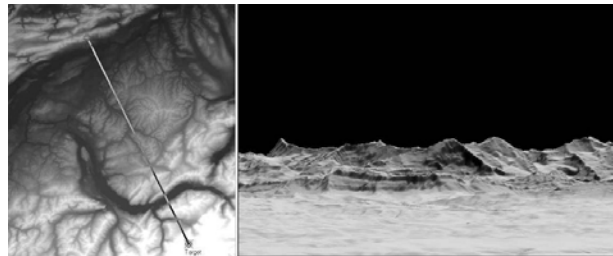
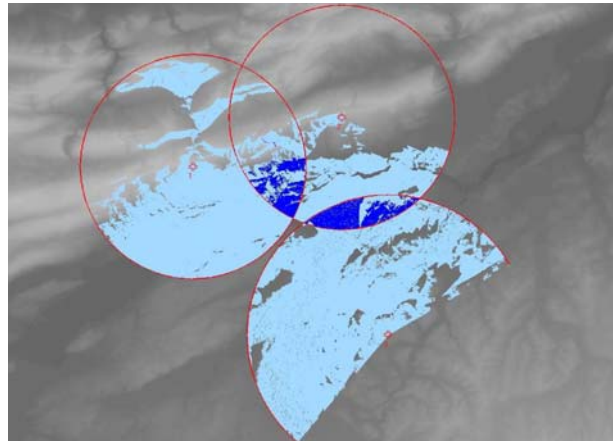
In combination with auxiliary information as digital terrain models, vector and statistical data, precise model computations as well as 3D-visualizations are possible:

- Positioning of antennas and antenna range; light blue: reception guaranteed; dark blue: access to several antennas.
- Digital terrain model with 10m x 10m spatial resolution; 3D-View from Weissenstein (Jura) towards the Bernese Alps.
- Superimposition of digital terrain model, surface morphology and satellite image;
- Landsat-TM/SPOT-P Merge, 10m x 10m, true color images and surface morphology derived from satellite data and auxiliary information;

Credit: Eurimage/Spot Image/mfb-geo.com/2000



Credit: mfb-geo.com/2000



Credit: Eurimage/Spot Image/mfb-geo.com/2000