



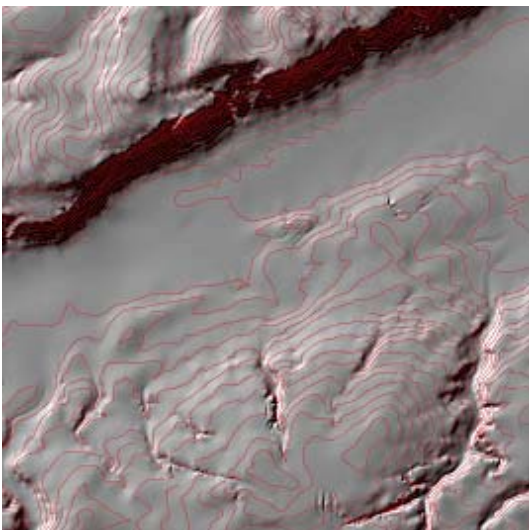
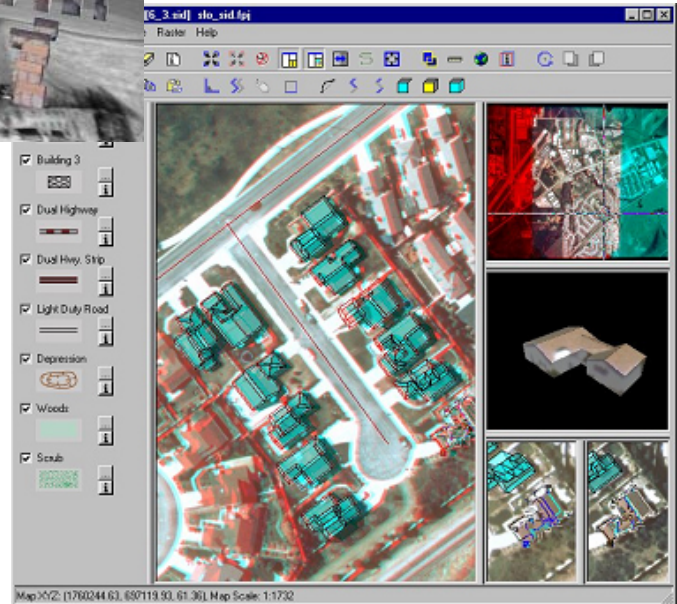
Credit: spaceimaging.com/mfb-geo.com/2000

„Extraction of digital elevation and surface models”

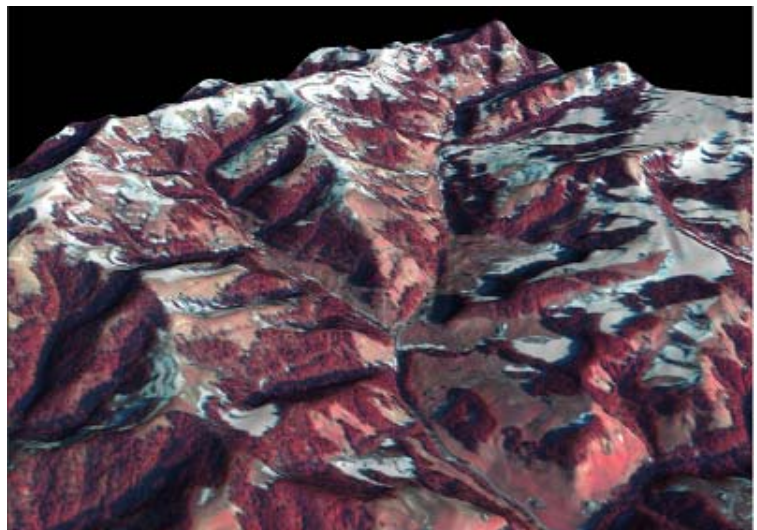
Based on high resolution stereo satellite and airborne laser scanning data, digital elevation (DEM) and surface (DSM) can be derived using digital photogrammetry tools (Leica Photogrammetric Suite). Furthermore, satellite imagery can be draped on the DEM/DSM for 3-D visualizations.

„3-D Feature Extraction and Visualization”

Based on Leica Stereo Analyst and 3-D firmware (shutter glasses, emitters, graphics cards), 3-D objects and city models can be extracted from high resolution stereo satellite data (or aerial photos as Leica ADS40 data). The 3-D objects and city models are then integrated with the 3-D scenery (satellite imagery draped on the DEM/ DSM) for digital lands-cape models, planning and telecommunication applications.



Credit: mfb-geo.com/2000



Credit: spaceimaging.com/mfb-geo.com/2000

