

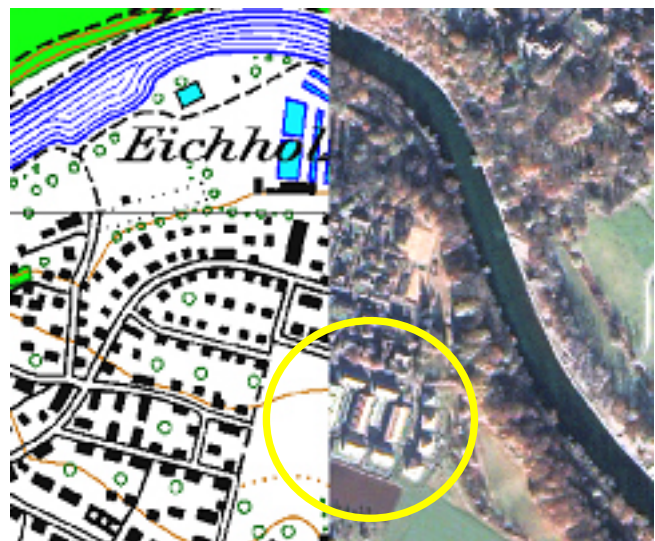
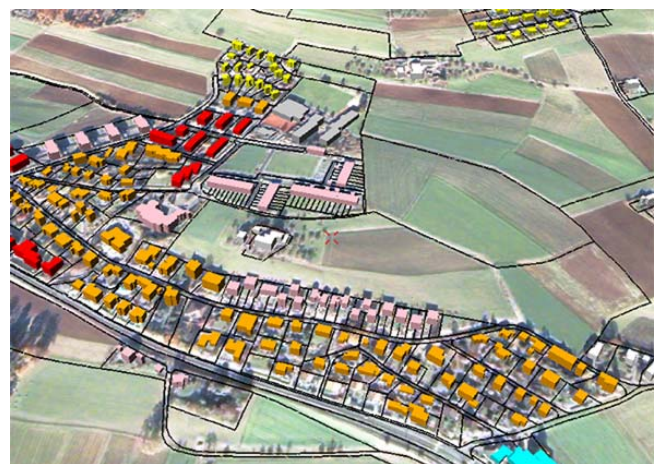
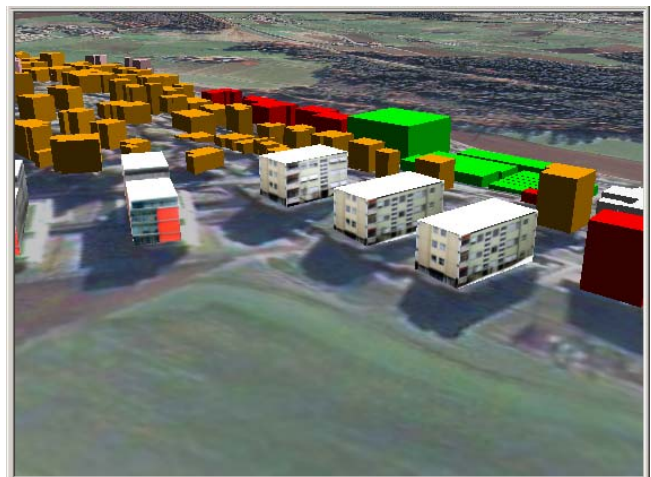


Credit: euspaceimaging.com/mfb-geo.com/2005

„Updating Master Plans” – City of Bern and Bern Region

IKONOS 1-meter pan-sharpened multi-spectral natural color images; collected November, 2003)

For urban planning, master plans can be updated based on high resolution satellite data. Furthermore, 3-D city models are extracted from high resolution stereo satellite data. 3-D presentations of satellite data, city models, master plans and cadastral plans enable planners to visualize interactively neighbourhood developments.



Credit: euspaceimaging.com/mfb-geo.com/2005

