

Credit: euspaceimaging.com/mfb-geo.com/2005

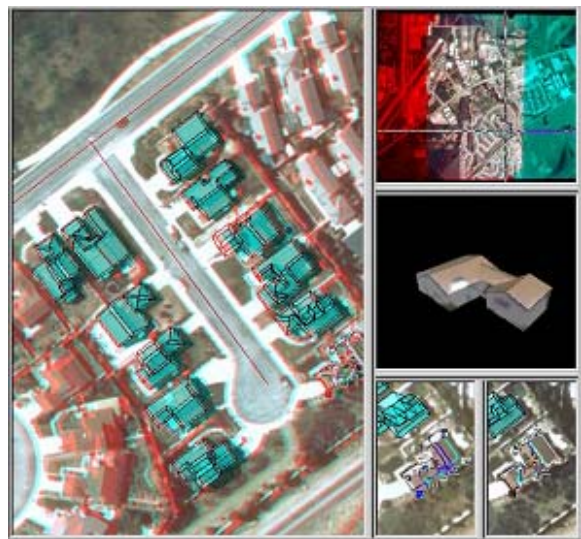
„Updating Master Plans” – City of Bern and Bern Region

For urban planning, master plans can be updated based on high resolution satellite data. Further-more, 3-D city models are extracted from high resolution stereo satellite data. 3-D representations of satellite data, city models, master plans and cadastral plans enables planners to visualize interactively neighbourhood developments.

„Updating maps 1:25,000 and 1:10,000” – City of Bern and Bern Region

IKONOS 1-meter pan-sharpened multi-spectral natural color images; collected November, 2003)

Today, having access to recent information on construction activities in urban areas is a basic need. High resolution satellite data are used for updating maps up to a scale of 1:5,000.



Credit: euspaceimaging.com/mfb-geo.com/2005

