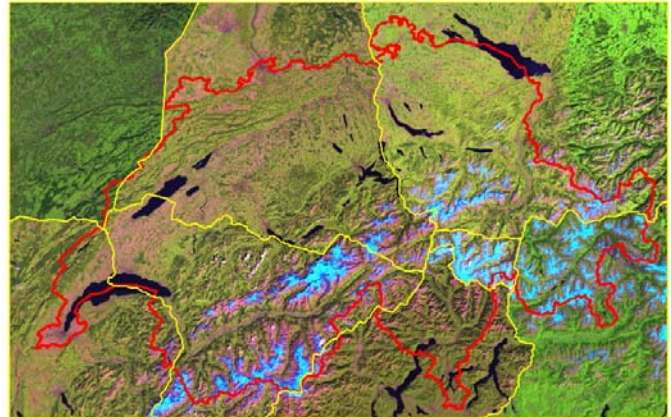
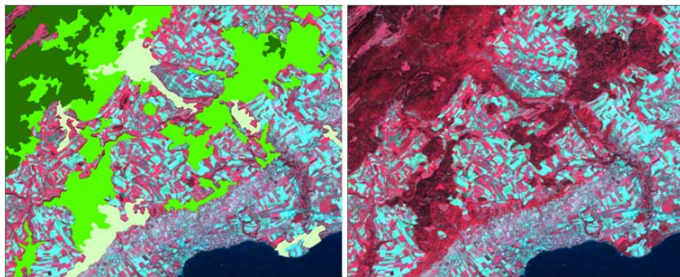


**CORINE Land cover 2000 and 2006  
Switzerland**

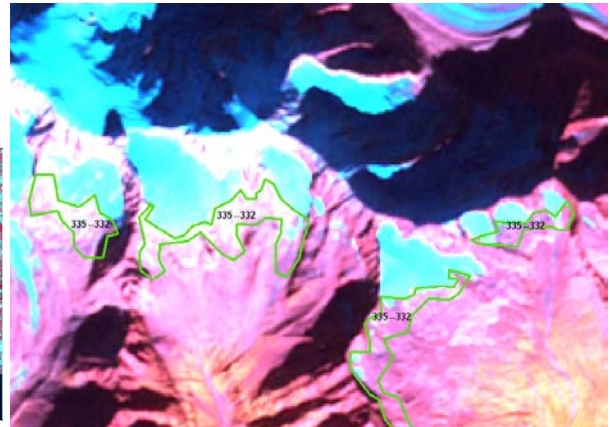
The CORINE (*Coordinated Information on the European Environment*) land cover project intends to provide consistent localized geographic information on the land cover of the 12 Member States of the European Community. The land cover classification of Switzerland in a scale of 1:100'000 is based on Landsat 7 images as well as some ancillary data (e.g. DHM25, Vector25, Swissimage etc). The satellite images were classified hierarchically using automatic and semiautomatic processes in ERDAS Imagine Professional. Changes between 2000 and 2006 were collected manually.



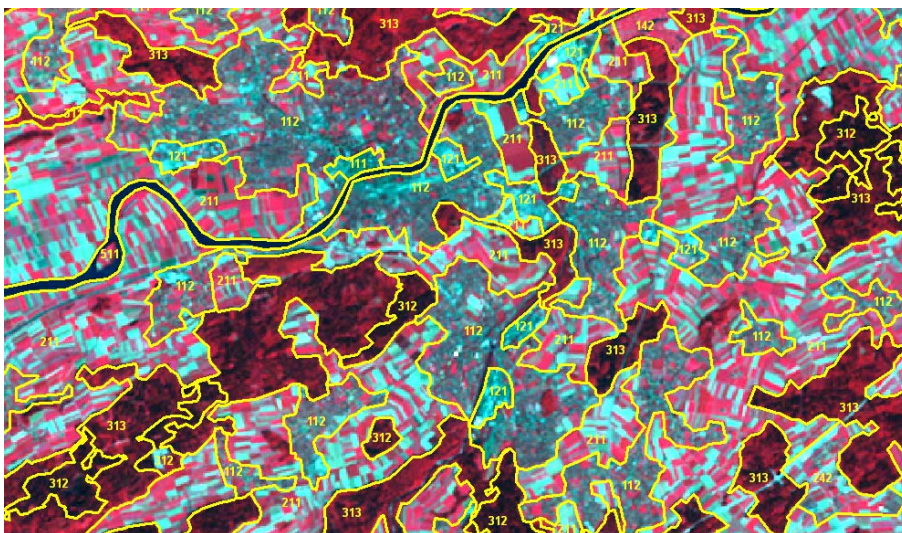
Landsat 7 Mosaic



Forest classification



Change detection: glacier melting



CLC 2000 in the region of Solothurn

1xx: artificial areas; 2xx: agricultural areas; 3xx: forest and semi-natural areas; 4xx: wetlands; 5xx: water bodies

Switzerland is covered around 30% by forest, 18% by non-irrigated arable land and 7% by artificial areas.

Between 2000 and 2006 a total area of 3855ha (0.09%) has changed. The majority of changes is caused by glacier melting.

Credits: www.mfb-geo.com

