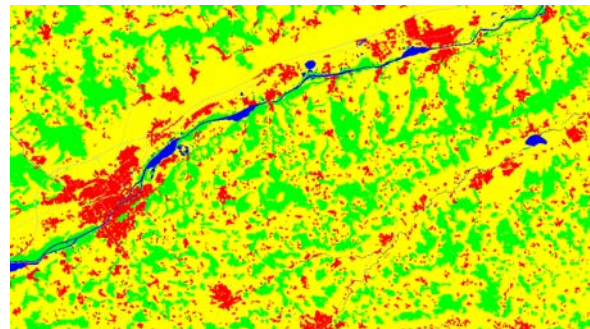


Landcover map for location evaluation of terrestrial radar stations

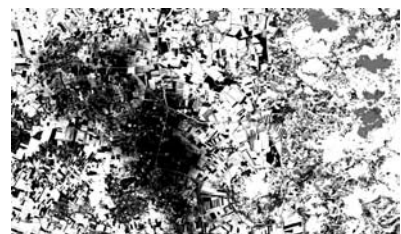
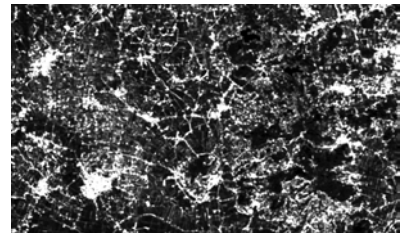
Within the frame of this project a landcover map of Switzerland and parts of its neighboring countries based on SPOT 5 satellite imagery was generated. Based on automatic and semiautomatic processes developed by MFB-GeoConsulting eight different classes (forest, water, glaciers, settlements, rocks, arable land and other vegetation, main roads and airports) with a spatial resolution of 10m could be distinguished. The project goal was to deliver data for location evaluation of terrestrial radar stations for air traffic control in Switzerland.



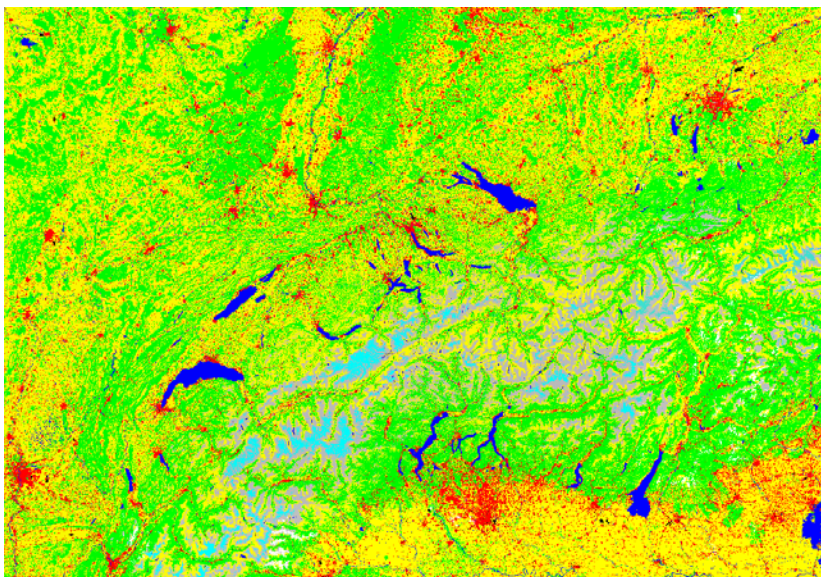
SPOT 5 scene ; Classification result in detail



SPOT 5 scene ;
Derived NDVI
and texture for
settlement
extraction



Credits: www.mfb-geo.com



Classification result (8 different classes)

