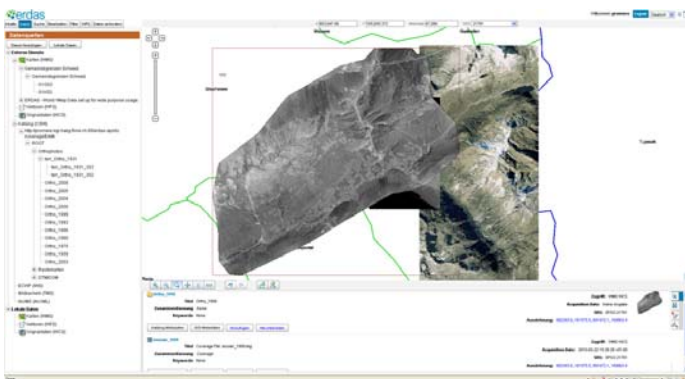
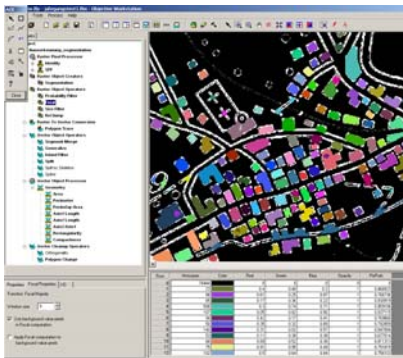


**ProMeRe – Processes and methods for an interdisciplinary spatial analysis and spatial development using the example of Andermatt**

The goal of this ongoing KTI research project with swisstopo and FHNW is the development of processes and methods of space-oriented analyses and visualization of historical, architectural and cultural spatial progress in 3D. The history of tourism and its impact on settlement structure, society and architecture are the focusing subject of this research project in Andermatt. Within this interdisciplinary project, methods and technologies of architecture, land use planning, geosciences, history and cultural sciences are applied.



The intension is to show exemplarily how the potential of technological innovation and interdisciplinary research can be combined and be used for questions of spatial monitoring and knowledge transfer to administration, public and science.



Credits: www.mfb-geo.com

Within the project, development of tourist infrastructure and hotel industry between 1850 and today were mapped using Siegfried maps, time series of aerial photographs and satellite images. In combination with terrestrial laserscanning the changes of the landscape due to this development were mapped in 3D. Houses, trails and their structural alteration could be extracted with ERDAS Imagine Objective. Huge amounts of geodata require a well organised management of these data in the inter- and intranet. Thereto ERDAS Apollo is used.

