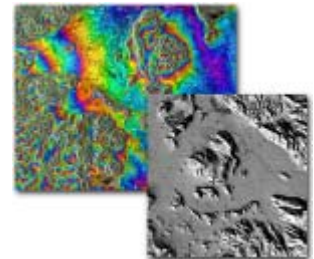


Enhancement IMAGINE InSAR für ERDAS IMAGINE 9.1



The **IMAGINE Radar Mapping Suite** is undergoing significant improvements in technology and capability. These improvements are a result of a strategic relationship between Leica Geosystems, the Remote Sensing Technology Institute of the German Aerospace Center (DLR), and GEOSYSTEMS GmbH. The joint effort has resulted in the creation of new capabilities in Leica's radar mapping software suite. Previously known as IMAGINE IFSAR DEM, the new release of IMAGINE InSAR 9.1 provides a more robust extraction process, increasing the accuracy of extracted digital elevation models (DEMs).

The improved and new tools for the IMAGINE InSAR 9.1 release includes:

1 New Phase Unwrapper

- Replacement of Co-Registration with improved automatic and semi-manual tools
- Improvement of Interferogram and Coherence generation
- Faster and more sophisticated Interferogram filter
- Use existing DEM for creation of simulated Interferogram
- Colored Interferogram generation
- Polishing and modification of the GUI
- Resolution of a height creation bug
- Online Help update

2 ALOS PALSAR support

Image reading support for Palsar sensor loaded on ALOS mission, which generates SAR images through two organizations JAXA (www.jaxa.jp) and ERSDAC (www.ersdac.or.jp)

- ALOS PALSAR image produced by JAXA (L1.1, L1.5) in CEOS format
- ALOS PALSAR image produced by ERSDAC (L1.5, L4.1, L4.2) in CEOS format
- ALOS PALSAR image produced by ERSDAC (L1.1) in VEXCEL SLC format

3 Orthorectification support for left-looking Radar images

While many of the enhancements listed will aid the user immediately, they also form a foundation for other IMAGINE Radar Mapping Suite enhancements currently under development.

NOTE: This rollout of the next generation of the IMAGINE Radar Mapping Suite requires the user to have IMAGINE Advantage 9.1 with Enhancement 2007.02 (fix 32748) installed.